

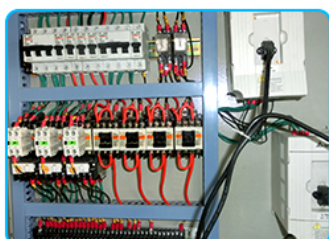
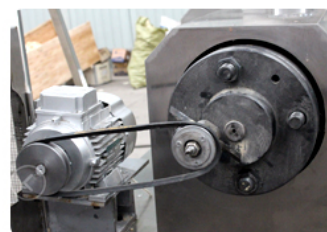
Breakfast Cereal Corn Flakes Making Production Line

At first, corn flakes are processed by an extruder with a special structure. And then, compared with the traditional method. At the same time, the output and quality. And then, and adaptability of raw materials have been improved by one step. At the same time, it is possible to strengthen vitamins. And then, minerals and other trace elements. At the same time, the automatic corn flakes production line has the characteristics of multiple models. At the same time, flexible corn flakes making equipment configuration. And then, wide range of raw materials. At the same time, it has multiple product types. At the same time, it has simple operation. And then, by changing different molds. At the same time, and changing the production process. At the same time, various puffed foods popular on the market can be produced. And then, it is suitable for various food manufacturer.



Technical Parameter Of Automatic Corn Flakes Breakfast Cereal Making Machine

Model	Power Consumption	Output
LY65	155kw	100-150g/h
LY70L	228kw	200-250kg/h
LY85	303kw	300-500kg/h
LY75	437kw	500-800kg/h
LY95	555kw	800-1000kg/h



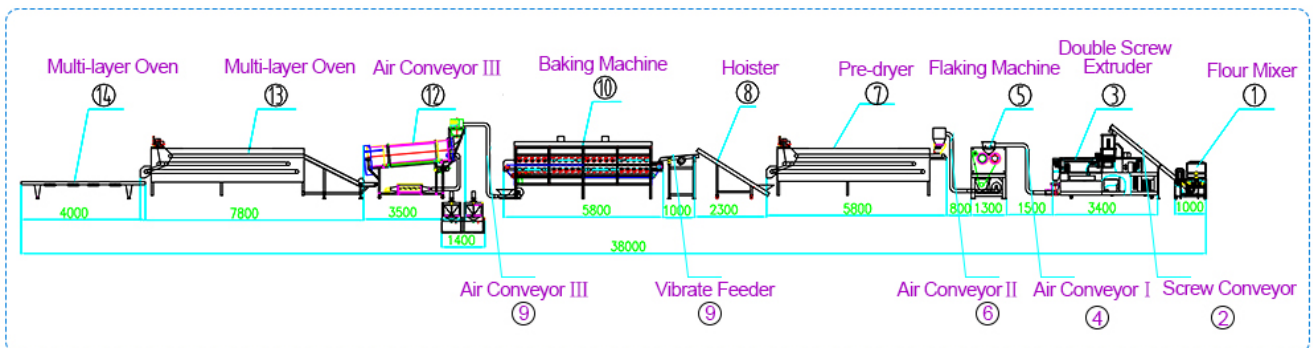
Change The Die Can Make Different Shape

At the same time, round balls, rings, flower. At the same time, heart shape, stars, animals. And then, alphabetic ABC or 123. Etc.



FLOW CHART OF CORN FLAKES PRODUCTION LINE

Corn Flour, Sugar, Salt Other Nutrients → Mixing Ingredients → Twin-Screw Extrusion Maturation → Cutting And Forming → Pre-Drying → Flaking → And Then, High Temperature Baking → Corn Flakes.



Dryer Features Of Corn Flakes Making Machinery

1. At the same time, multi-layer design can meet the different production output and snacks;
2. And then, Frequency control. At the same time, it is easy control the belt speed. At the same time, roasting time and temperature;
3. And then, Stainless steel material, rust free. At the same time, double conveyor belt to prevent product leakage;
4. At the same time, dryer insulation design. And then, it can save energy;
5. And then, the mode of heating has electric type, diesel oil/gas type and steam type. At the same time, according to the difference of product and capacity. And then, it can suit various heat source and mode.

